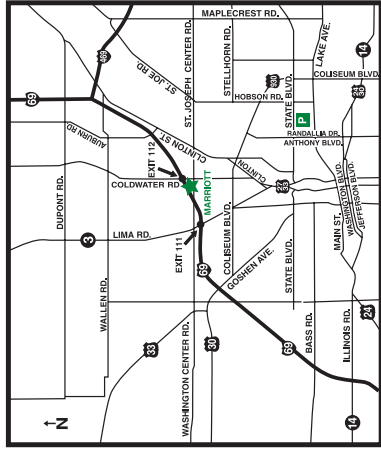


The Stanley Wissman Neuroscience Symposium

Registration form for Oct. 22, 2009

Please print. Remember to enclose your \$60 check.

Name _____
Title/Designation _____
Employer/Affiliation _____
Address _____
City _____ State _____ ZIP _____
Phone _____ E-mail address _____

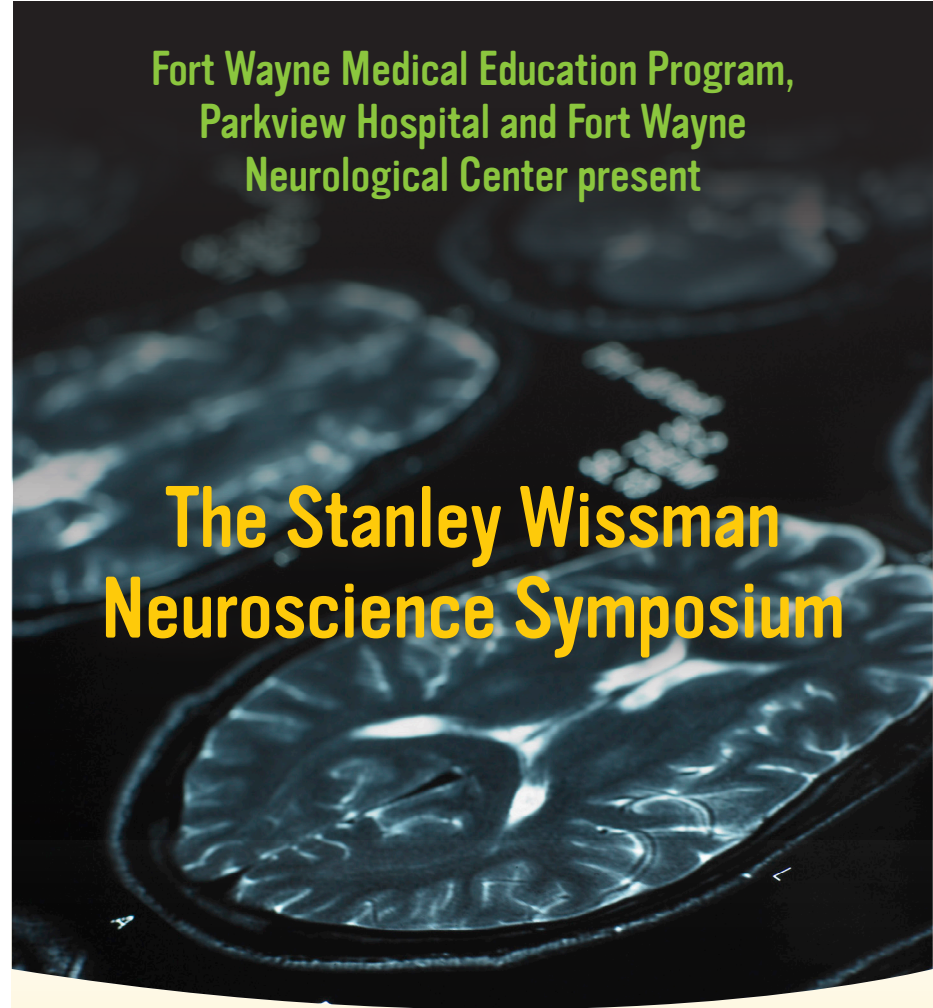


The Fort Wayne Marriott is located at 305 E. Washington Center Road. To access from I-69, take exit 111 or exit 112.



Parkview Health | 10501 Corporate Drive | Fort Wayne, IN 46845

NON-PROFIT ORG.
U.S. POSTAGE
PAID
FORT WAYNE, IN
PERMIT NO. 1424



The Stanley Wissman Neuroscience Symposium

Fort Wayne Medical Education Program,
Parkview Hospital and Fort Wayne
Neurological Center present

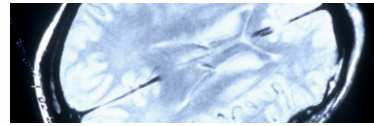
Thursday, Oct. 22, 2009
11:45 a.m. – 5 p.m.
The Fort Wayne Marriott Ballroom
305 East Washington Center Road

Registration fee: \$60



The Stanley Wissman Neuroscience Symposium

Thursday, Oct. 22, 2009



Agenda

11:45 a.m. – 12:25 p.m.	Registration/Lunch/Vendor Display
12:25 – 12:30 p.m.	Welcome Joe Ottinger, MD, Fort Wayne Neurological Center
12:30 – 1:30 p.m.	<i>Recent Advances in Mitochondrial Diseases</i> John M. Shoffner, MD
1:30 – 2:30 p.m.	<i>Therapeutic Advances in Multiple Sclerosis</i> Kottil W. Rammohan, MD
2:30 – 2:45 p.m.	Break/Vendor Display
2:45 – 3:45 p.m.	<i>Studying the Role of the Hematopoietic Microenvironment in the Pathogenesis of Neurofibromatosis Type 1 (NF1) – From Bench to Bed</i> Feng-Chun Yang, MD, PhD
3:45 – 4:45 p.m.	<i>Epilepsy in the Elderly</i> Adriana S. Tanner, MD
4:45 – 5 p.m.	Questions and answers/Evaluations

Objectives

1. Discuss recent advances in disease recognition in mitochondrial disease.
2. Discuss mitochondrial-disease diagnostic approaches to include criteria for patient diagnosis and pitfalls.
3. Identify treatment of multiple sclerosis as it pertains to the pathogenesis of the disease.
4. Discuss current and future treatments of multiple sclerosis.
5. Discuss the use of murine models for NF1.
6. Review the role of hematopoietic microenvironment in tumorigenesis of NF1.
7. Identify methods for targeting the microenvironment to treat plexiform neurofibromas.
8. Review the challenges in the diagnosis and treatment of seizures in the elderly.
9. Discuss the unique impact seizures and epilepsy have in older adults.

Educational Credits

The Fort Wayne Medical Education Program is accredited by the Indiana State Medical Association to provide continuing medical education for physicians.

The Fort Wayne Medical Education Program designates this educational activity for a maximum of 4.0 AMA *PRA Category 1 Credit(s)*[™]. Physicians should only claim credit commensurate with the extent of their participation in the activity.

Application for CME credit has been filed with the American Academy of Family Physicians. Determination of credit is pending.

AAPA accepts prescribed credit from AAFP and AMA Category 1 CME credit for the PRA from organizations accredited by the ACCME.

Pharmacists: Programs that directly enhance the knowledge and skill in the practice of pharmacy are accepted by the Indiana Board of Pharmacy as approved continuing education. This program has been approved for 4.0 CE hours.

Parkview Health, Fort Wayne, Indiana, is an approved provider of continuing nursing education by the Indiana State Nurses Association, an accredited approver by the American Nurses Credentialing Center's Commission on Accreditation.

Speakers

John M. Shoffner, MD, President and CEO, Medical Neurogenetics, LLC., Atlanta, Ga.

Kottil W. Rammohan, MD, Professor of Neurology; Director of Clinical and Experimental Neuroimmunology; Director, Multiple Sclerosis Center, The Ohio State University.

Feng-Chun Yang, MD, PhD, Assistant Professor for Pediatric Research, Herman B. Wells Center, Indiana University School of Medicine, Indianapolis, Ind.

Adriana S. Tanner, MD, Medical Director, Epilepsy Center, Neuroscience Program, Saint Mary's Health Care, Grand Rapids, Mich.

Symposium Planning Committee

Warren Wilhelm, BA, MA, EdD, Associate Director of Continuing Medical Education, Parkview Hospital, Fort Wayne, Ind.

C. Joe Ottinger, MD, Fort Wayne Neurological Center, Fort Wayne, Ind.

Lynn Wilton, MS, RN, CRRN, CNRN, CBIS, Clinical Nurse Specialist, Parkview Hospital, Fort Wayne, Ind.

Rob Plant, PharmD, Director, Parkview Research Center, Fort Wayne, Ind.

Funding

This program is partially funded by unrestricted educational grants from the following pharmaceutical companies: **Teva Neuroscience and UCB Pharma.**

About the Stanley Wissman Stroke Center and Parkview Neurological Services

- Region's first primary stroke center accredited by The Joint Commission, providing state-of-the-art neurointerventional services and 24/7 availability of advanced catheter-based treatments for acute stroke.
- Area leader in diagnosis and treatment of a wide range of neurological disorders and diseases, including epilepsy, MS and Parkinson's.
- Offers integrated rehabilitation program, national research and innovative treatment techniques, such as telemedicine.
- Recognized for quality of care by HealthGrades, the national healthcare quality assessment organization:
 - ~ Five-Star Rated for stroke treatment, 2005 – 2009
 - ~ Ranked in Top 5% in the nation for treatment of stroke, 2009
 - ~ Received HealthGrades Stroke Care Excellence Award[™], 2009
- Recipient of American Heart Association's Get With The GuidelinesSM Silver Award in 2008 and 2009.

Notes

- If you need auxiliary aids or services with regard to a disability, contact Warren Wilhelm at (260) 373-4430.
- Room temperature may fluctuate, so please dress accordingly.

Registration

Make check payable to Parkview Hospital. Send registration form and check for \$60 to the following address by Oct. 20, 2009:

Parkview Hospital
ATTN: Warren Wilhelm
2200 Randallia Drive
Fort Wayne, IN 46805

For conference information,
call (260) 373-4430.

